

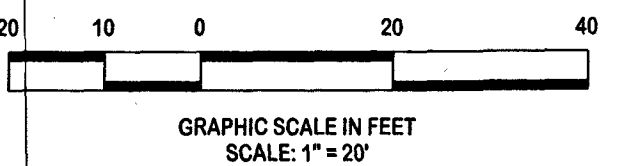
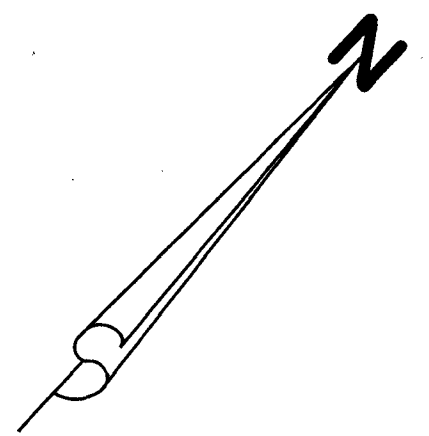
# LOXAHATCHEE CLUB AT MAPLEWOOD PLAT NO. 32 OF PHASE II

BEING A REPLAT OF LOT 17R, AS SHOWN ON THE PLAT OF LOXAHATCHEE CLUB AT MAPLEWOOD PLAT NO. 27 OF PHASE II, RECORDED IN PLAT BOOK 126, PAGES 44 AND 45, AND A PORTION OF THE COMMON AREA, AS SHOWN ON THE PLAT OF THE LOXAHATCHEE CLUB AT MAPLEWOOD PLAT NO. 6 OF PHASE II, RECORDED IN PLAT BOOK 54, PAGES 103 THROUGH 105, PUBLIC RECORDS OF PALM BEACH COUNTY, FLORIDA. LYING IN SECTION 11, TOWNSHIP 41 SOUTH, RANGE 42 EAST, TOWN OF JUPITER, PALM BEACH COUNTY, FLORIDA

MAY 2023

193

SHEET 2 OF 2



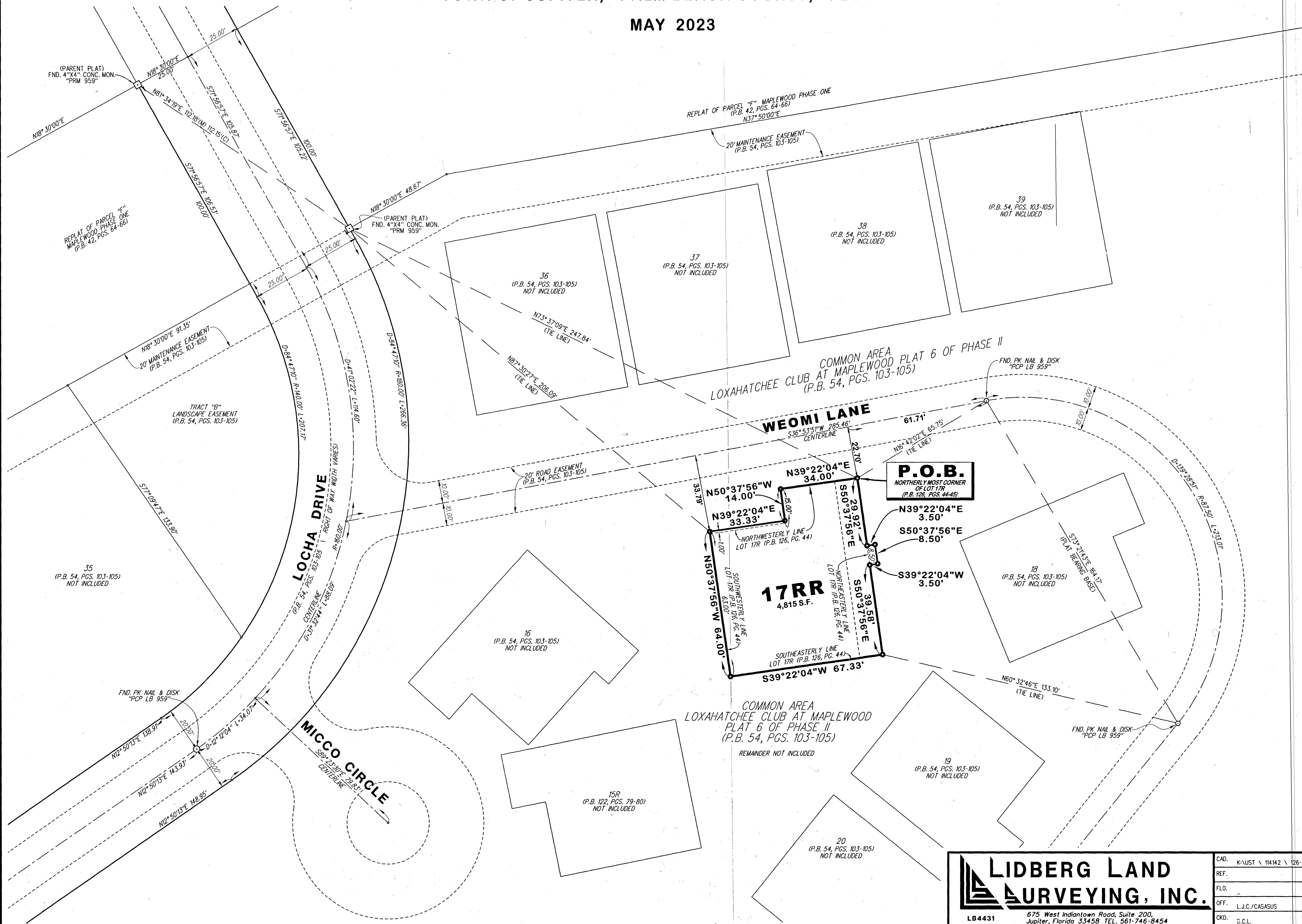
### ABBREVIATIONS:

- (C) = CALCULATED DISTANCE
- (M) = MEASURED DISTANCE
- D = CURVE'S DELTA ANGLE
- R = CURVE'S RADIUS
- L = CURVE'S ARC LENGTH
- FND. = FOUND
- LB = BUSINESS LICENSE
- O.R.B. = OFFICIAL RECORD BOOK
- P.B. = PLAT BOOK
- P.C.P. = PERMANENT CONTROL POINT
- P.O.B. = POINT OF BEGINNING
- P.R.M. = PERMANENT REFERENCE MONUMENT
- P.S.M. = PROFESSIONAL SURVEYOR AND MAPPER
- PG. = PAGE
- PGS. = PAGES

### LEGEND:

- = DENOTES SET PERMANENT REFERENCE MONUMENT - SET 5/8" IRON ROD & METAL CAP "PRM LB 4431"

THIS INSTRUMENT WAS PREPARED BY DAVID C. LIDBERG, P.S.M., IN AND FOR THE OFFICES OF LIDBERG LAND SURVEYING, INC., 675 WEST INDIANTOWN ROAD, SUITE 200, JUPITER, FLORIDA 33458. TELEPHONE (561) 746-8454.



<b>LIDBERG LAND SURVEYING, INC.</b>		CAD. K:\UST \ 11412 \ 126-44 \ 17-118A-306 \ 17-118A-306.DGN
REF.		
FLO.	FB.	PC.
OFF. L.J.C./CASASUS		JOB 17-118A-306
		DATE MAY 2023
CKD. G.C.L.	SHEET 2 OF 2	DWG. D17-118PP

675 West Indiantown Road, Suite 200, Jupiter, Florida 33458 TEL. 561-746-8454